

An illustration of a bald eagle with white feathers on its head and neck, and brown feathers on its body. The eagle is wearing a red backpack and holding blue binoculars. It is standing on a log in a forest with green trees and mountains in the background.

Volunteers, Thermoses, and Counting Eagles: a How-To Guide

National Midwinter Bald Eagle Survey
(MWBES)



Route Digitization Demo

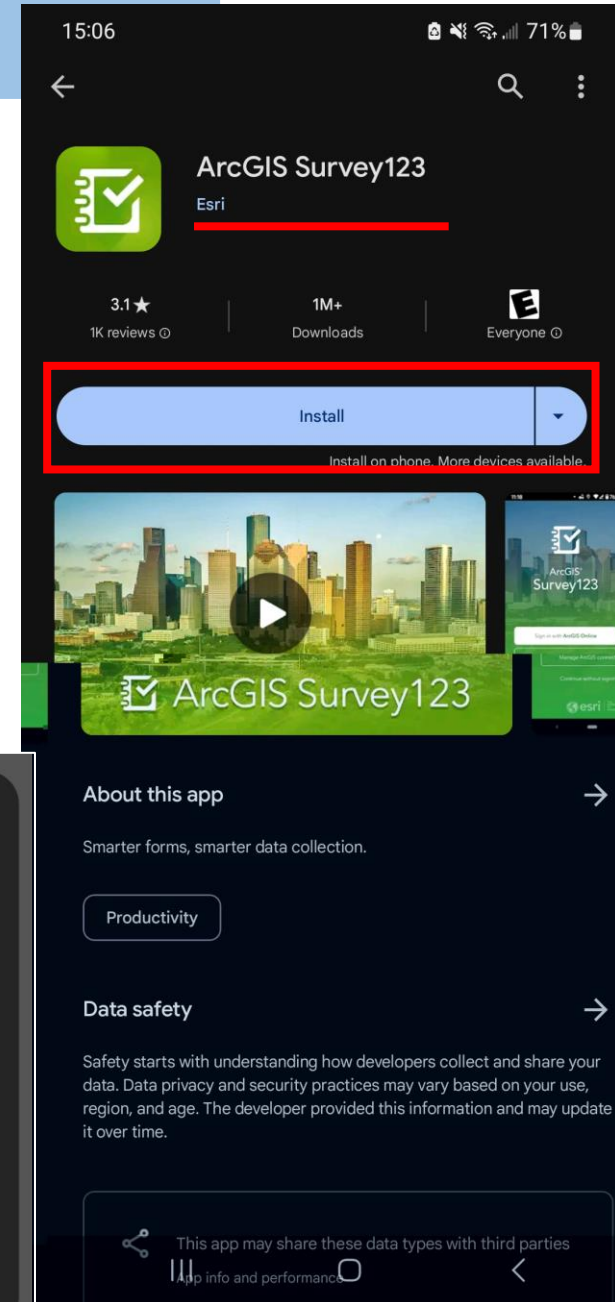
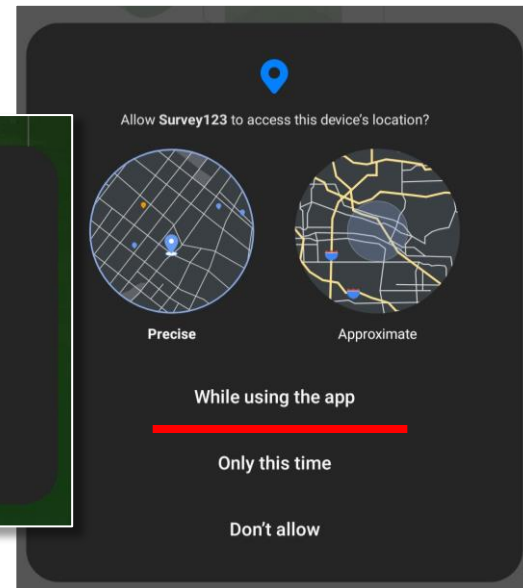
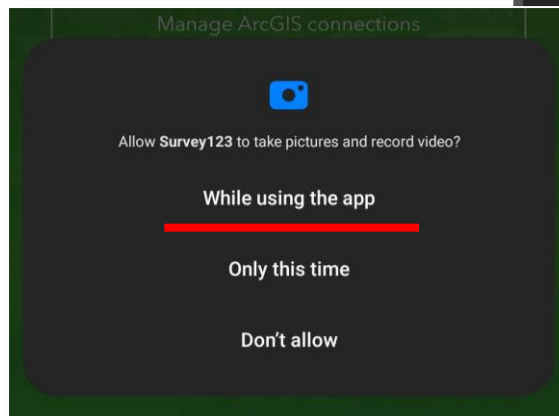
- Free online options to digitize route (will be demo'd)
 - Google Earth (earth.google.com)
 - On the Go Map (onthegomap.com)
- Other options:
 - Fitness trackers or apps Apple Watches/Garmin or Runkeeper can record walks as you go and export routes
 - Boating-SavvyNavy app



Install Survey123

1. Install Survey123 from the Google Play Store or Apple Play Store
 - Open the Play Store and search for “ArcGIS Survey123”
 - Author is “Esri”
 - Click the Install button
2. Once the Survey123 app has installed successfully on your device –
 - Open the app
3. When prompted, select “While using the app” for the following prompts:

- Allow Survey123 to take pictures and record video?
- Allow Survey123 to access this device’s location?





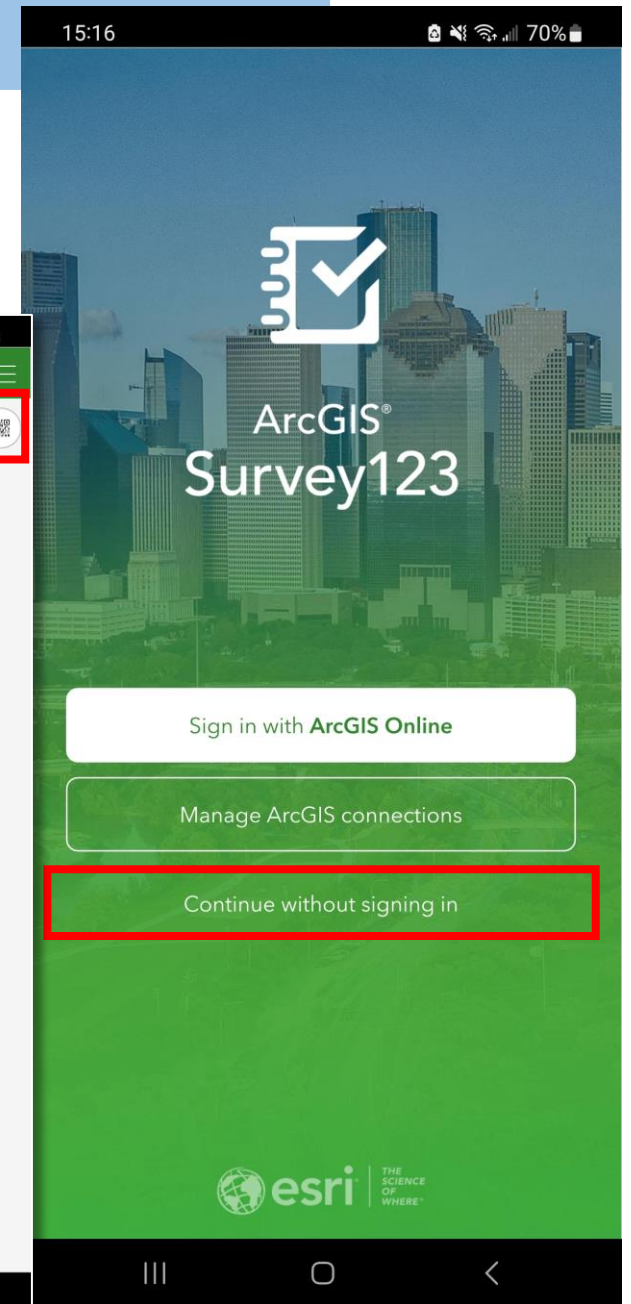
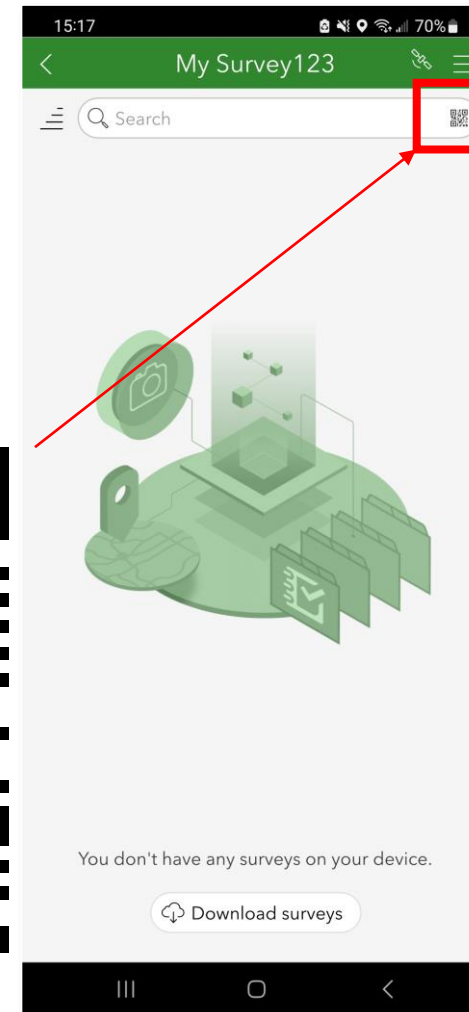
Open Survey123 & Load the Survey

4. Once the app is open, select **“Continue without signing in.”**

- If you are already signed in to your organization’s account SIGN OUT, then “Continue without signing in”

5. On the right side of the “Search” menu bar, there is a tiny QR code symbol

- Click the QR code symbol and scan the **MWBES Eagle Survey QR** code below
- NOTE: you will only have to scan the QR code for initial access





Using the Survey

6. After scanning the QR code, you will receive a “Loading Survey” message

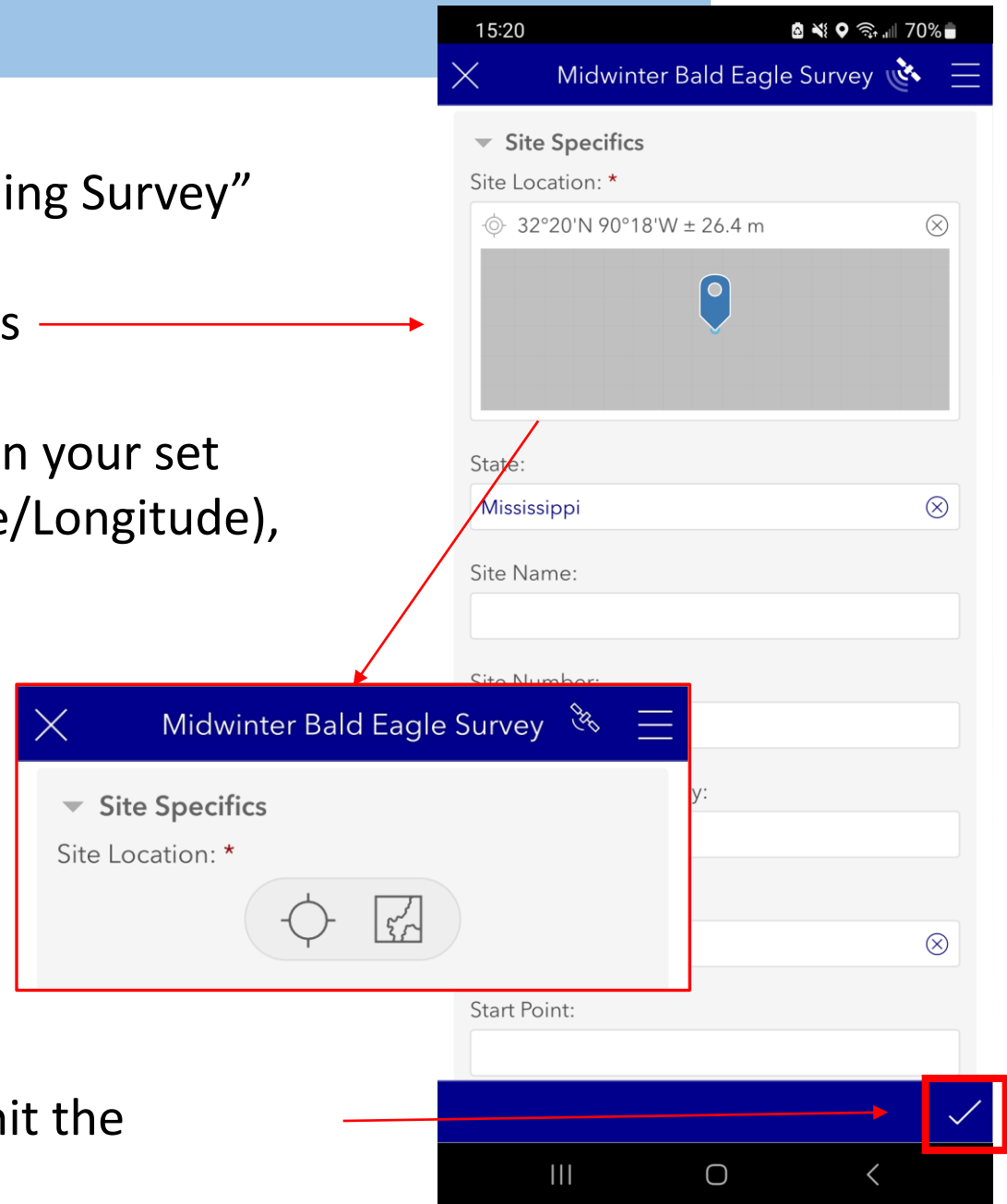
7. The survey will open automatically and looks like this

NOTE: Several fields will **automatically** update based on your set location on the map (i.e. State, County/Parish, Latitude/Longitude), please ensure your location is showing on the map

8. When adding your location, you have two options:

- **Compass/Crosshairs icon:**
 - this will place your point wherever your phone’s GPS is pinging
- **Map Icon:**
 - allows you to input an address or location manually

9. Scroll down and fill out the survey, when complete hit the “checkmark” at the bottom right





Using the Survey

10. After submitting a survey, the app will send you back to the MWBES home page

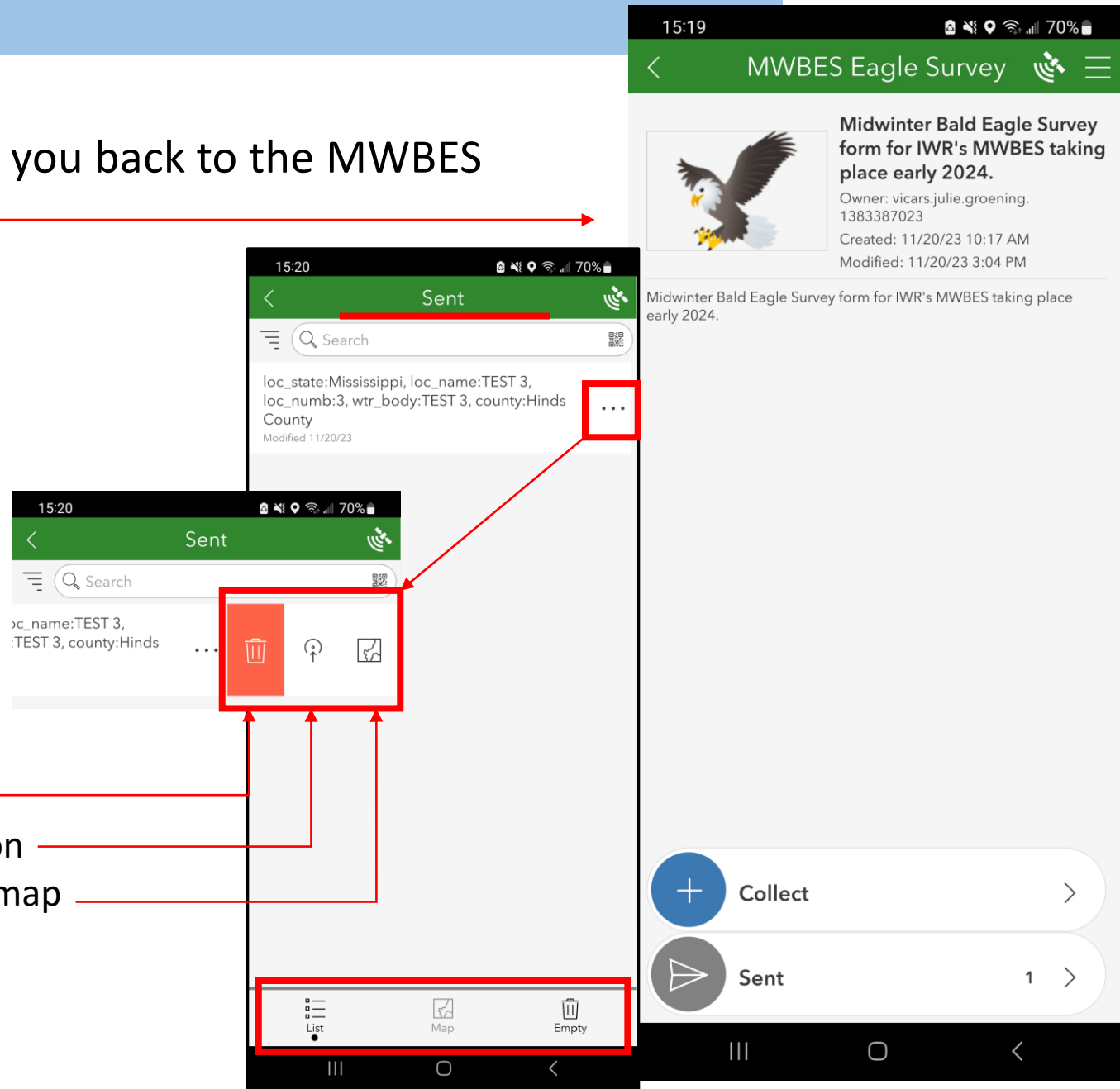
11. From here, you have access to:

- **Collect**
 - allows you to collect a new point
- **Sent**
 - see the surveys you have previously submitted and edit that data

Delete: deletes the record

Go To: navigates user to the location

Map it: shows the location on the map





Previous Year's Survey (Unsubmitted)

If you have a [previous year's survey](#) for the same location, that was unsubmitted, you can use this section to submit that information.

To submit a [previous year's unsubmitted survey](#):

1. Select "Yes" to enter the previous survey
2. Enter the date/time (you can go backwards in time)
3. Complete the questions using documentation from the previously unsubmitted survey
4. Once complete (and the present day/2024 survey is complete), click the "checkmark" in the bottom right to submit the record

NOTE: clicking the "checkmark" submits the **entire survey** – present day AND/OR previously unsubmitted – ensure questions are complete before submitting the record.

The image displays three overlapping screenshots of the 'Midwinter Bald Eagle Survey' mobile application interface. The top screenshot shows the 'Previous Year's Survey (Unsubmitted)' section, with a red box highlighting the title and another red box highlighting the 'Yes' radio button. Below this, there is a text prompt: 'Click "Yes" to enter a previous year's survey: If you select "Yes" and have documentation from the previous year (that was NOT previously submitted), you may complete the "Previous Year's Survey" section.' The middle screenshot shows the 'Survey Results' section, including 'Eagles Observed' (Bald Eagles, Golden Eagles, Both Golden and Bald, Unknown Eagles, None), 'Bald Eagle(s)', 'Golden Eagle(s)', 'Unknown Eagle(s)', 'Observer(s) Information' (Name of Recorder, Number of Observers, Email, Affiliation), and 'Weather Conditions' (Temperature, Fog, Precipitation, Wind, Cloud Cover). The bottom screenshot shows the 'Survey Procedures' section, including 'Survey Date and Time' (Date), 'Total Time of Survey (minutes)', 'Roost or Non-Roost' (Roost, Non-Roost), 'Continuous, Fixed Point, or Both' (Continuous, Fixed Point, Both), 'Total Miles Surveyed', and 'Survey Method'. A large blue checkmark icon is visible in the bottom right corner of the collage.



Points of Contact

Mike Vissichelli

Michael.G.Vissichelli@usace.army.mil

Ashleigh Boss

Ashleigh.N.Boss@usace.army.mil

Julie Vicars

Julie.G.Vicars@usace.army.mil